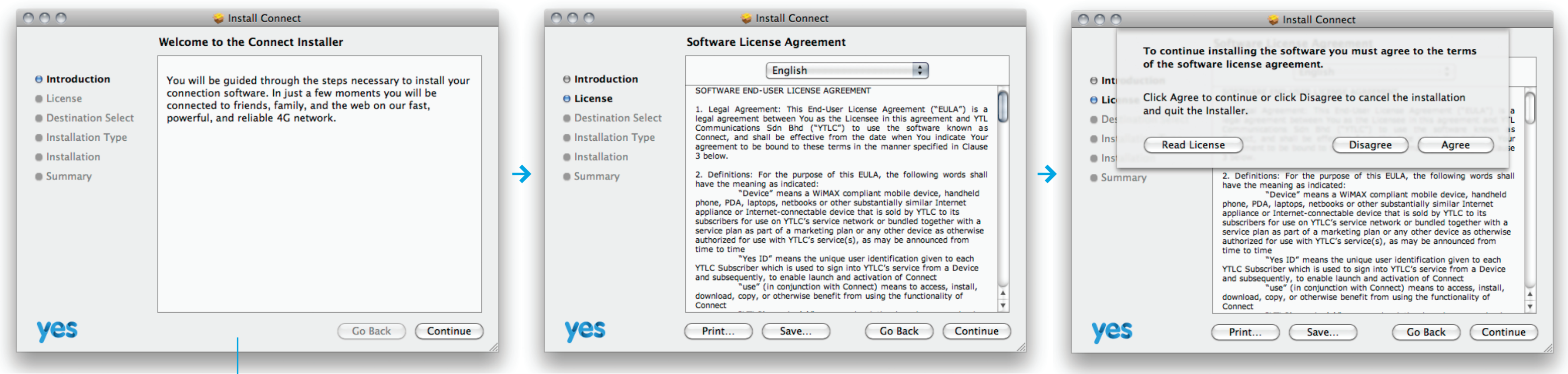


Part 1: Yes Connect Install Sequence (Windows)

Yes, the grabs are from the mac installer. The please focus on the text and the flow.



Text should read:

While updating Yes Connect:

- DO make sure your computer is plugged in to a power source.
- DO NOT shut down your computer while the update is in progress.
- DO NOT remove the Go dongle until the update is completed.

Now you will be guided through the steps necessary to install Yes Connect.

In just a few moments you will be connected to friends, family and the web, on the fast and reliable Yes 4G network.

If the installer detects an older version of connect already installed.

1

Install Connect
There is an older version of Yes Connect installed on this computer. You must uninstall the older version before continuing with this installation.
<div>CancelUninstall</div>

If there is no Go dongle plugged in.

2

Install Connect
There is no Go dongle plugged into this computer. Please plug in your Go dongle before continuing.
<div>CancelContinue</div>

If there is already a newer version of Yes Connect installed on the machine.

3

Install Connect
There is a newer version of Yes Connect installed on this computer.
<div>Cancel</div>

These messages should display as early as possible in the install flow.
If both 1 and 2 are true, 1 will be shown and not 2.

Part 2: Yes Connect Install Sequence (Windows)

Changes to the install flow are text additions and edits.

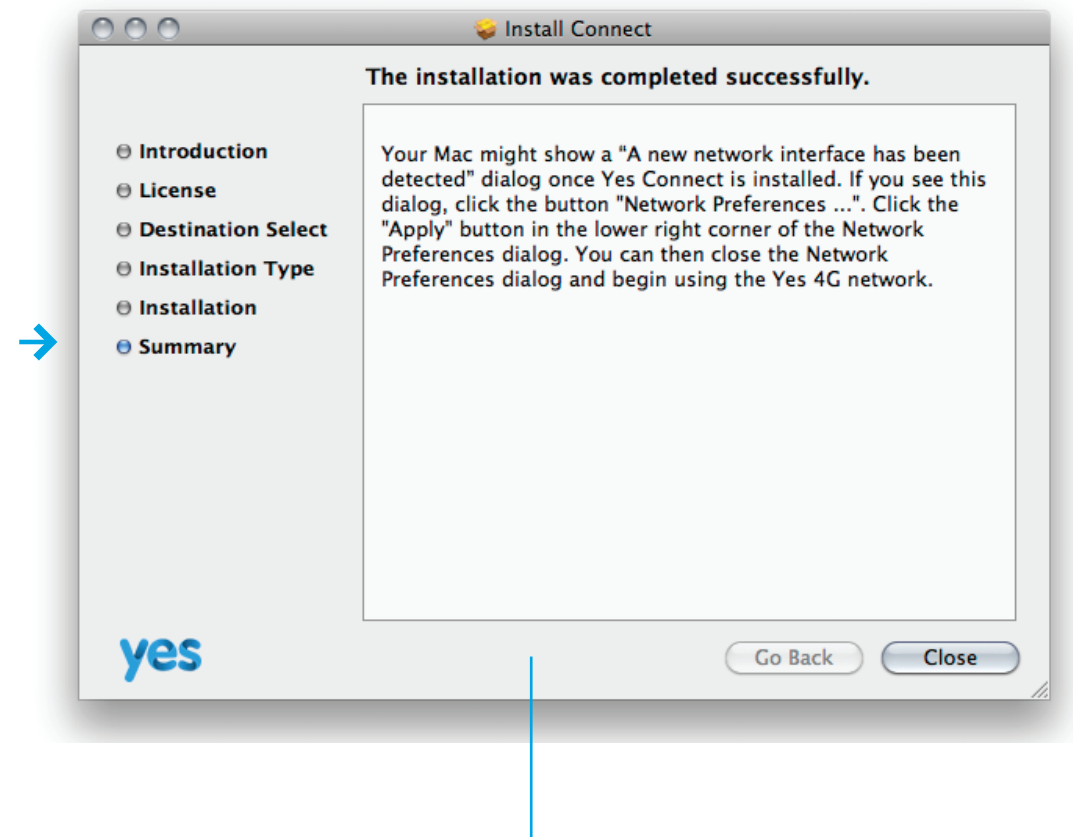


No changes to this sequence.



Part 3: Yes Connect Install Sequence (Windows)

Changes to the install flow are text additions and edits.



Text should read:

MAC COMPUTERS ONLY:

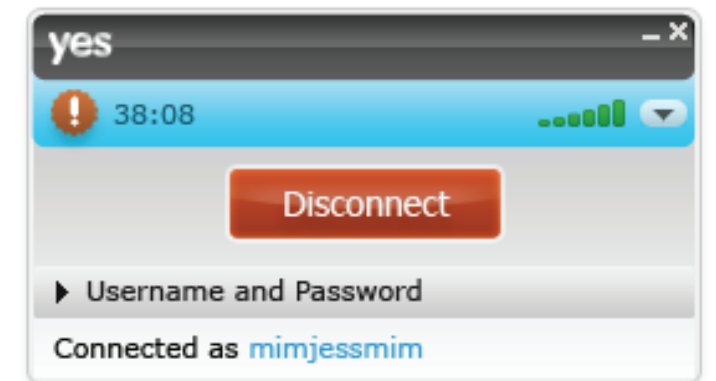
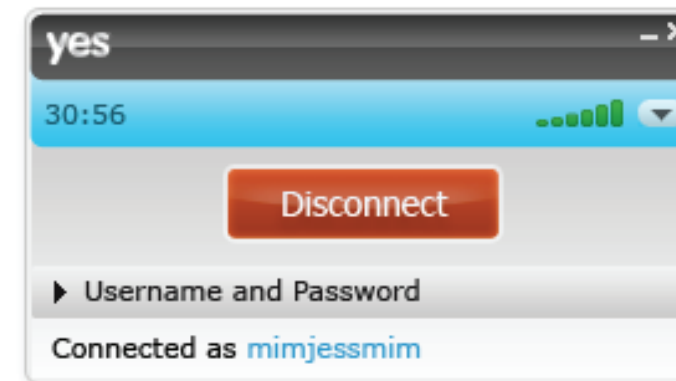
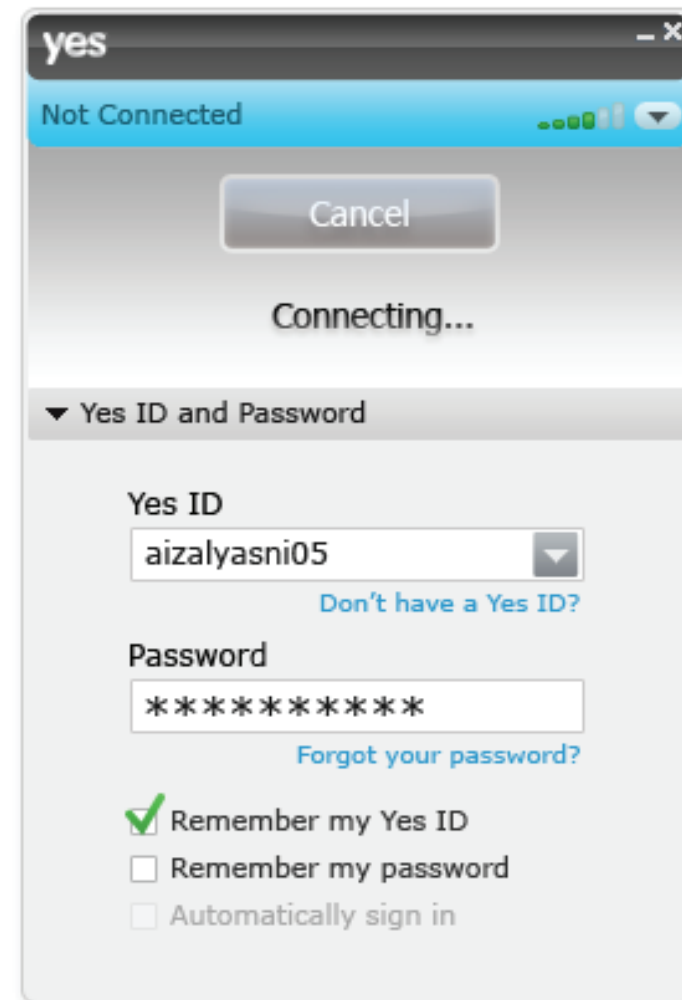
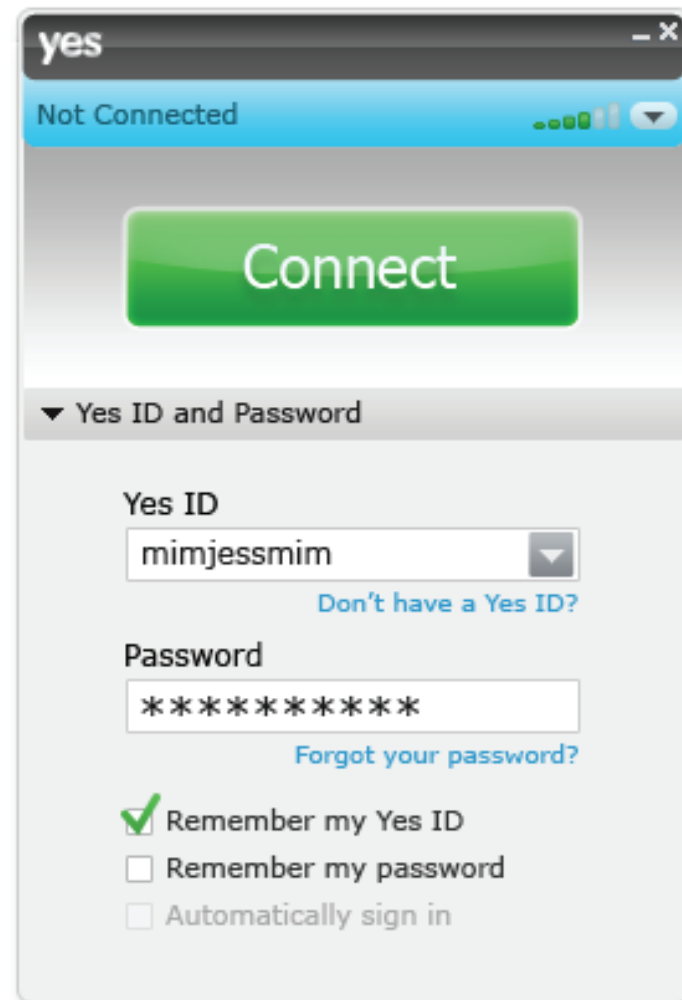
Once Yes Connect is installed, your Mac might show a "a new network interface has been detected" dialog. If you see this dialog, click the button "Network Preferences...". Then click the "Apply" button in the lower right corner of the Network Preferences dialog.

You can then close the Network Preferences dialog and begin using the Yes 4G network.

WINDOWS:

Welcome to the fast, reliable world of Yes 4G!

Yes Connect Sign In Sequence (Windows)



Blue portion of interface is enlarged to accommodate added messaging and alert icon.

Not connected message is moved out of title bar and into blue bar.

Once connected, the time connected is shown. "Connected" text is removed from previous version of Connect.

In this view there are no new notifications.

When notifications are detected, the time online is shifted to the right, and the notification icon is show on the left.

The icon is clickable. Clicking on it opens the notification window.

Time format:

00:01 - signed in for one second

59:59 - fifty-nine minutes, fifty-nine seconds

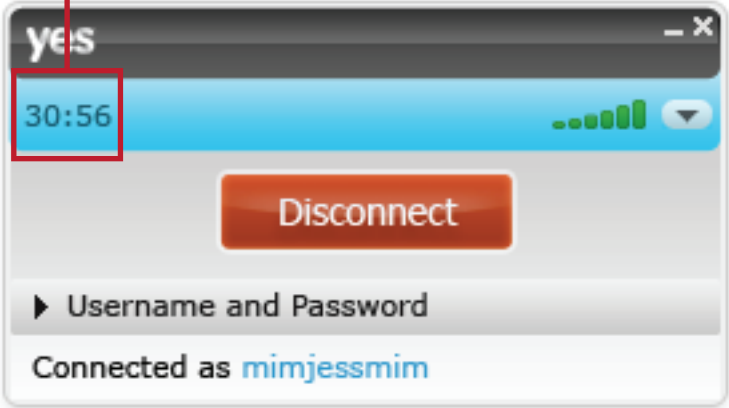
1:30:05 - one hour, thirty minutes, five seconds

15:40:50 - fifteen hours, forty minutes, fifty seconds

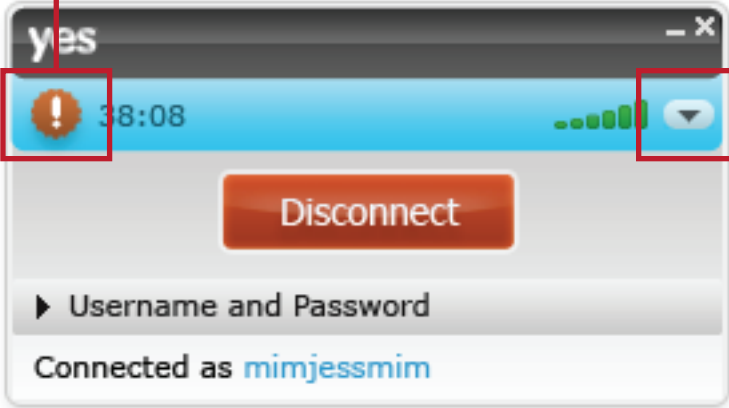
1:23:05:30 - one day, twenty-three hours, five minutes, thirty seconds

Yes Connect Identification of New Parts (Windows)

Time Online
Resets to zero per session.
See formatting on previous slide.

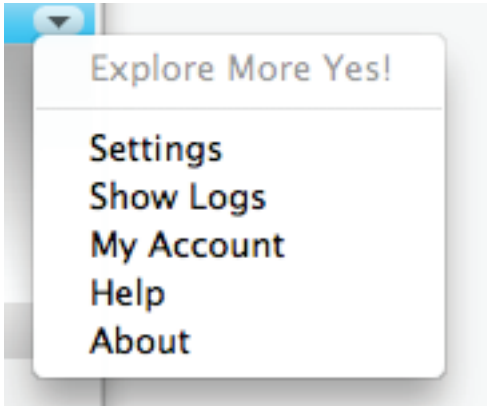


New Notification Indicator
Shows when there are new, unread messages.
Is removed once the user has clicked and viewed
the latest messages.

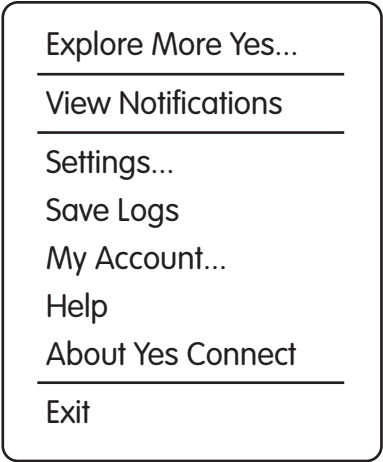


Additional items in the menu
See below for details.

Current Menu



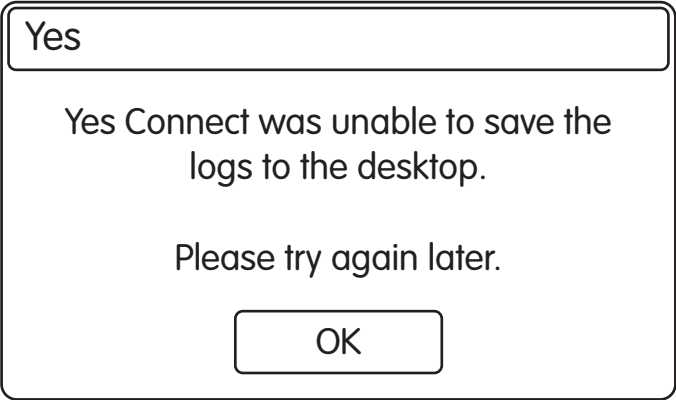
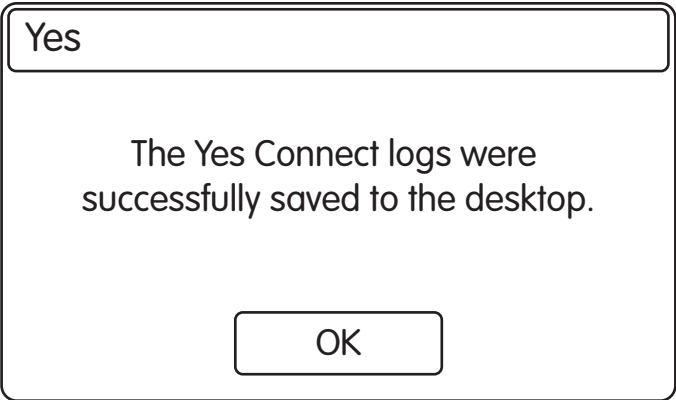
New Menu



“View Notifications” opens the notifications window and displays notifications per requirements (based on Yes Life?)

“My Account” opens the user’s account page on the yes.my portal

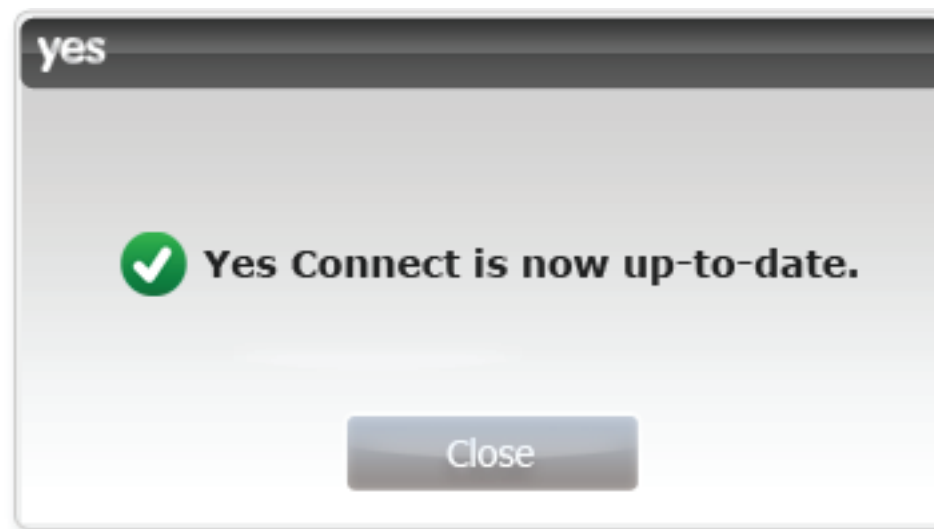
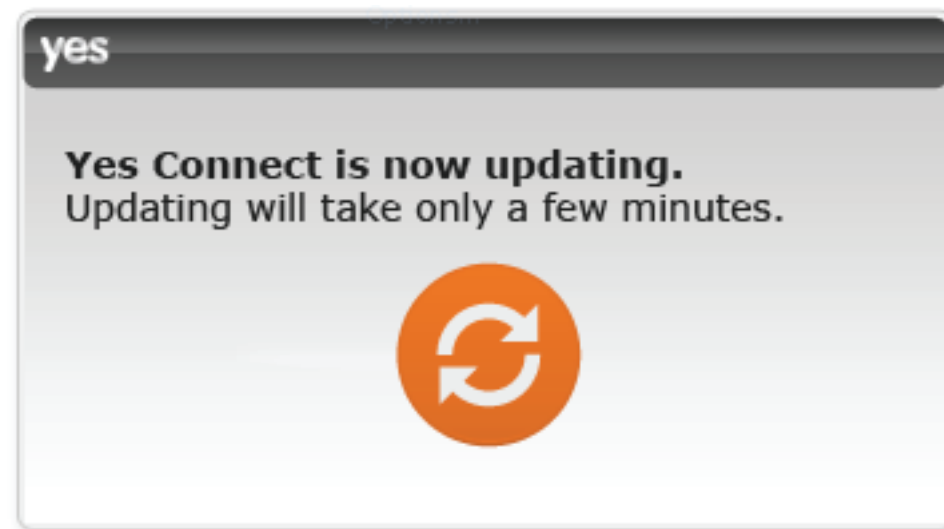
Save Logs →



Yes Connect Identification of New Parts (Windows)

Update Available -- At app launch; update was fully downloaded in previous session, but user quit the app without installing it.

If the computer is not plugged in, and there are not enough battery reserves as per the install requirements, then the Yes Connect will launch and skip the install sequence. The user will be shown the "update is available" UI once the application launches.



→ Yes Connect is launched

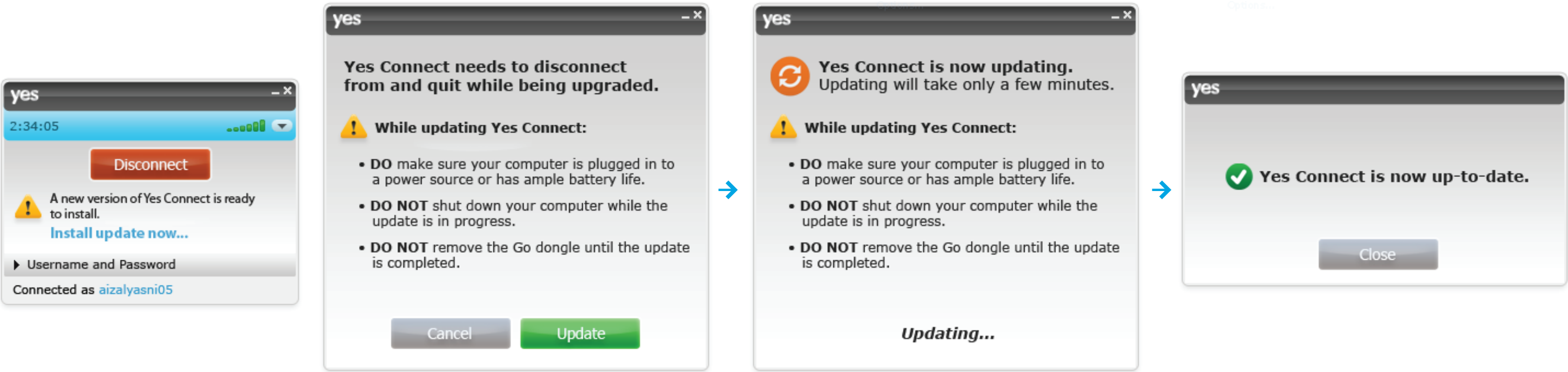
Yes Connect Identification of New Parts (Windows)

Update Available -- In App Update flow
Upon signing into Connect, the app will check to see if there are updates available. If yes, the updated will be downloaded silently in the background. Once the update is fully downloaded, this messaging will appear.

Both mandatory and voluntary updates appear in the same manner.

If there is not enough power to perform the install the update button is grayed out.

Design strongly feels this is not a user friendly feature. John recommends not including it.



Update Details

I'm recommending that all updates be treated as 'mandatory' and the flow is as detailed below.

Mandatory updates are installed in one of two ways:

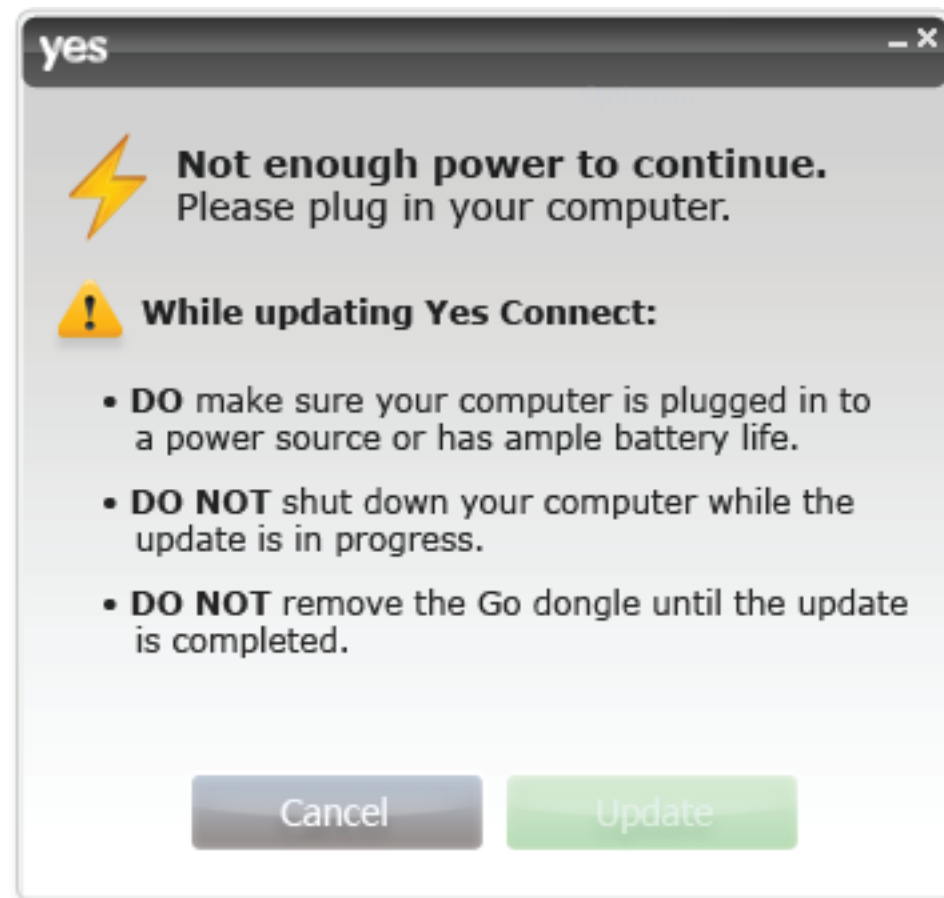
1) By the user initiating an installation by clicking the "Install update now..." link.

2) By quitting and restarting the Yes Connect application where an update is already downloaded and ready for install. Upon restart, the update installer will automatically be launched.

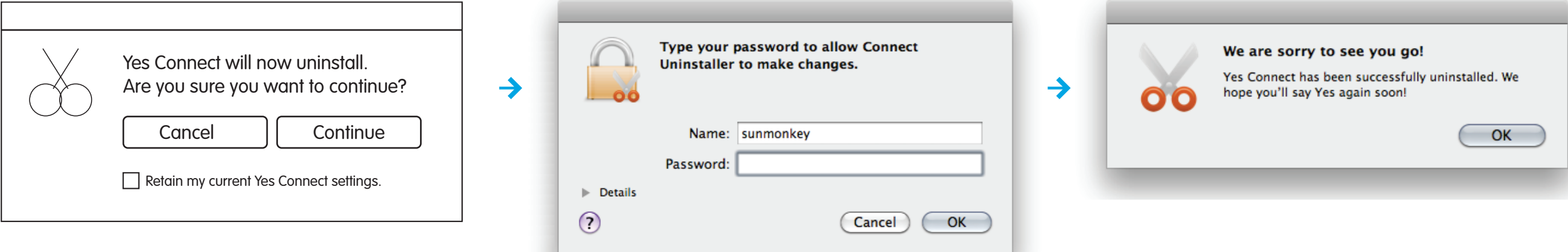
We can eliminate option number 1, if we are confident that users restart Yes Connect often.

Yes Connect Identification of New Parts (Windows)

If there is not enough power to perform the install
the update button is grayed out.



Uninstall Sequence



The above replaces this step:

